



# Sweet Patoodies

© Sharon Saylor-Chinn



## Daisy & Ribbon Notebook

### **DECOART AMERICANA ACRYLIC PAINTS**

Buttermilk, Moon Yellow, Soft Black

### **DELTA CERAMCOAT ACRYLIC PAINTS**

Candy Bar, Capecod Blue, Dark Forest, Gypsy Rose, Indiana Rose, Nightfall Blue, Wedgewood Green, White

### **SURFACE**

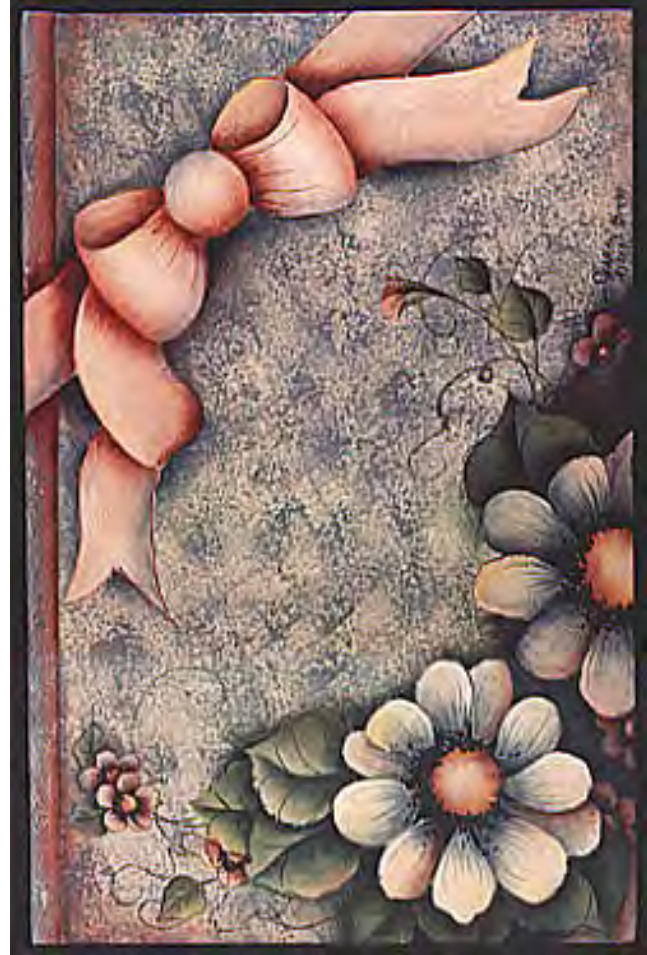
6" x 9" Canvas Notebook or Address Book

### **PAINTING INSTRUCTIONS**

No prep is needed on the canvas book. To paint background, using a small slightly damp sea sponge, dip it into CAPECOD and pounce it on your palette to remove any excess "globs" of paint. Bounce the sponge up and down on notebook to add paint to your canvas background keeping the texture light and airy. It's better to start light and add more paint as desired. If you get too much blue paint in an area, just dip your sponge into some BUTTERMILK and sponge back over the area to lighten it. The spine of the book is based with GYPSY ROSE, then sponged over with CAPECOD and BUTTERMILK to soften it. Sideload the front corners with a wash of CANDY BAR.

Once the background is dry, transfer your design with graphite paper and begin to paint, referring to photo for placement of shading, highlighting, and accent colors.

**Ribbon & Bow...** Base with INDIANA ROSE. Float shade with GYPSY ROSE. Darken shadows with CANDY BAR. Float highlight with WHITE. Float accents of CAPECOD BLUE and MOON YELLOW. Outline with CANDY BAR.



**Daisies...** Base with BUTTERMILK. Float hatched with NIGHTFALL BLUE. Darken some of the shadows with CANDY BAR. Float highlight with WHITE. Accent petals by floating some edges with GYPSY ROSE and MOON YELLOW. Keep top daisy darker. You can go over it lightly with a wash of CAPECOD BLUE if you need to tone it down. Outline petals with NIGHTFALL + SOFT BLACK.

Centers are based with MOON YELLOW. Float shade with CANDY BAR. Highlight with BUTTERMILK. Seeds around center are SOFT BLACK. Touch in seed specks of CANDY BAR and MOON YELLOW using the tip of a liner brush.

**Small Flowers...** Base with GYPSY ROSE. Float shade with CANDY BAR. Keep the ones on the right side darker. Highlight these with CAPECOD. The small flowers on the left side are lighter in value. Highlight these with BUTTERMILK. Outline petals with CANDY BAR.

Centers are the same as for the daisies.

**Leaves...** Lighter leaves are based in WEDGEWOOD GREEN. Float shade with DARK FOREST. Float

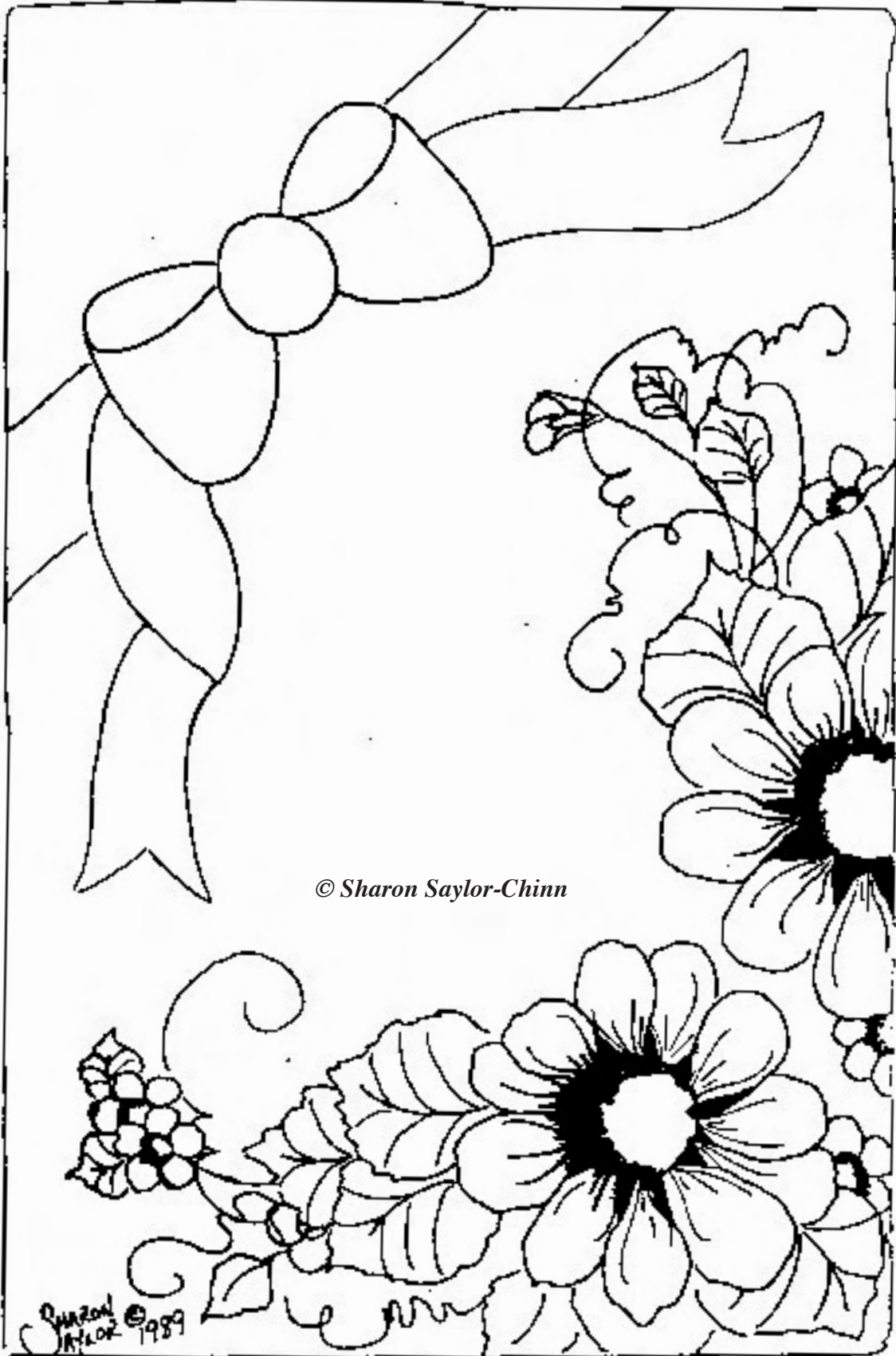
highlight with BUTTERMILK and MOON YELLOW. Float accents of GYPSY ROSE. Darker leaves are based with DARK FOREST. Float shade with SOFT BLACK. Float highlight with CAPECOD. Float accents of CANDY BAR and NIGHTFALL. Outline leaves with SOFT BLACK.

**Background...** Float background around daisies and leaves with NIGHTFALL. Darken the shadows, especially between the daisies with SOFT BLACK. You can finish the address book with 3-4 coats of waterbase varnish to protect it.

**© Sharon Saylor-Chinn.** All rights reserved under Pan American and international copyright conventions. Photocopying or any type of mechanical electronic reproduction of any part of this pattern packet or the designs herein are prohibited, except purchaser may mechanically/electronically enlarge or reduce patterns for their personal use. If this pattern packet is purchased as an e-Pattern or CD, you may not re-sell the pdf file, nor make copies of the pdf files for re-sale or to give away. The projects created from the patterns in this pattern packet may be personally painted by purchaser for fun or for sale (i.e., at local craft shows, on internet auctions such as eBay, and on their own websites or photo sites), although if shown on the internet I do ask that you please give me credit for the design in your description. The designs cannot be used to create web graphics. The product created from or any derivative product made from the designs in this pattern packet cannot be mass produced in any form without a licensing agreement from Sharon Chinn.

**Note to Teachers/Shop Owners...** You may not mechanically/electronically reproduce my pattern packets and books for students in your classes. I will be happy to sell packets or books to you for each student at a wholesale discount so they can be included with the class supplies at a nominal cost. Regarding my books, you may make one photocopy of the line drawing only for each student, and I ask that you please provide credit to me for the design including which book it was taken from.

**Disclaimer:** The information in this pattern packet is presented to you in good faith. Since the author/designer has no control over the physical conditions surrounding the application of information presented, I cannot guarantee results, nor will I be liable for any charges against the user for claims of copyright or patent infringement. Please note that with photo development differences it is difficult to match the photos in this pattern packet to the original pieces, although every effort has been made to do so. Therefore, your finished project may look a little different in color than the photos in this pattern packet. The colors used in the project instructions are the ones used by me to paint the finished projects.



© Sharon Saylor-Chinn

Sharon Saylor © 1989